



# Parentscope...

Phone 330-929-1901 Fax 330-929-1737  
Daycare 330-603-4171  
www.chapelhillchristianschool.org

CHAPEL HILL CHRISTIAN SCHOOL  
Sept. 8, 2009

NORTH CAMPUS  
1090 Howe Ave.  
Cuyahoga Falls, OH 44221

*From the Principal's*



## IMPORTANT INFORMATION ABOUT THE FLU

As you may know, flu can be easily spread from person to person. Therefore, we are taking steps to reduce the spread of flu in Chapel Hill Christian School. We want to keep the school open to students and functioning in a normal manner during this flu season. But, we need your help to do this.

We are working closely with the Summit County Health District to monitor flu conditions and make decisions about the best steps to take concerning schools. We will keep you updated with new information as it becomes available. For now, we are doing everything we can to keep our school functioning as usual. Here are a few things you can do to help:

- **Teach your children to wash their hands** often with soap and water or an alcohol-based hand rub. You can set a good example by doing this yourself.
- **Teach your children not to share personal items** like drinks, food or unwashed utensils, and to cover their coughs and sneezes with tissues. Teach them to cover up their coughs or sneezes using the elbow, arm or sleeve instead of the hand when a tissue is unavailable.
- **Know the signs and symptoms of the flu.** Symptoms of the flu include fever (100 degrees Fahrenheit, 37.8 degrees Celsius or greater), cough, sore throat, a runny or stuffy nose, body aches, headache, and feeling very tired. Some people may also vomit or have diarrhea.
- **Please keep sick children at home** for at least 24 hours *after* they no longer have fever or do not have signs of fever, without using fever-reducing drugs. Keeping children with a fever at home will reduce the number of people who may get infected.
- **Do not send children to school if they are sick.** Any children who are determined to be sick while at school *will be sent home.*
- **The Summit County Health District is encouraging everyone (except children under 6 months of age) to get a seasonal flu vaccine.**

For more information, please visit [www.flu.gov](http://www.flu.gov) or call 1.800.CDC.INFO for the most current information about the flu. For more information about flu in our community, visit [www.schd.org](http://www.schd.org) or call 330.923.4891. We will notify you of any additional changes to our school's strategy to prevent the spread of flu.



*Verse of the Week*

*I urge you, in view of God's mercy, to offer your bodies as living sacrifices, holy and pleasing to God - this is your spiritual act of worship* **Romans 21:1**

### For All Families

Please feel free to fill out the Middle School Interest Survey located on the homepage of our website

### Returning Families

Please take a minute to fill out the End of The Year Survey (2008-2009) on our website:

[www.gotwings.org](http://www.gotwings.org)

The survey results will be tabulated soon and we need your input!

### Mark Your Calendar

#### Sept.

16 - Picture Day  
30 - Mid-Term I

#### Oct.

2 - Mid-Terms go home  
12 - Principal's Club  
16 - Open House  
22 - Early Dismissal 2pm  
No PM Daycare  
23 - ACSI Convention - No School  
27 - Picture Re-takes  
30 - End of 1<sup>st</sup> Quarter



**School Pictures  
Wednesday  
Sept. 16<sup>th</sup>**

**Lifetouch Picture Packets are being sent home today. Please return them with your student on picture day.**



*Monday, September 14,  
Chapel Speaker will be*

*Mr. Greg McAbee,  
Administrator at CHCS*

*Parents are always  
welcome to attend!*

# Guatemala Student Sponsorship

The coins are rolling in for our children in Guatemala! It's wonderful to see the Lord provide for our sponsored students through generous CHCS children. The offering will continue through September for our twelve sponsored children. ¡Gracias!

## Are You Available



We are looking for people who are interested in substituting for classroom aides. If you are available to sub, please come to the school office to obtain an application for employment. A background check will be required to work in the classrooms.

**Volunteer Opportunity** – We are looking for someone interested in heading up our Box Tops Program. This would only require a couple hours a week and can be done from home. Interested? Please contact the office.



**PLEASE REFRAIN FROM PARKING IN THE CHURCH STAFF PARKING SPACES OR ON ANY GRASSY AREAS. OVER FLOW PARKING IS AVAILABLE IN THE MALL LOT.**



Copies of class photos taken at the beginning of the school year can be obtained by emailing: [sgrizzle@chapelhillchristianschool.org](mailto:sgrizzle@chapelhillchristianschool.org). Mrs. Grizzle will then email a PDF of the photo to you.

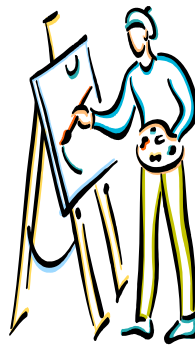
These photos are currently displayed on the bulletin board in the hallway outside the Business Office.



### DID YOU KNOW?????

CEREAL WITH MILK IS AVAILABLE EVERY MORNING UNTIL 8:30 DURING BEFORE SCHOOL CARE FOR \$1.00

STUDENTS CAN SELECT FROM RAISIN BRAN, CINNAMON TOAST CRUNCH, AND HONEY BUNCH OF OATS.



*Artist of the Week*

**Noah Yingling**  
3Q

*You can view Noah's 'Op Art' piece outside the Art Room Door*

# FUNdraiser

Our first FUNdraiser of 2009-2010, *Enjoy the City Savings Book*, kicked off on Friday, September 04, 2009. This fundraiser will run through the 22<sup>nd</sup> of September. One book should have come home with each student in an envelope with an order form to purchase additional books. The cost of the book is \$20, and offers over \$1000 in savings! Our school wide goal is 2 books sold per student. Each student selling one book will pick from the treasure chest, sell 2 books and spin the CHCS Prize Wheel. The student selling the most will receive a \$100 VISA gift card. There are also classroom incentives. **Any books not sold must be returned to CHCS.**

## PROGRESS WITH CHESS



Chapel Hill Christian School – North is pleased to offer students in grades 1-6 the opportunity to learn and play the exciting game of chess!

**SESSION:** BEGINS SEPT. 17, 2009 THROUGH DEC. 3, 2009  
**WHEN:** THURSDAYS, IMMEDIATELY AFTER SCHOOL (3:30-4:30)  
**WHERE:** CHAPEL HILL CHRISTIAN SCHOOL  
**COST:** \$60 (TEN-WEEK SESSION), INCLUDES FREE ENTRY TO LOCAL CHESS TOURNAMENT.  
**DISCOUNT:** \$40 FOR EACH ADDITIONAL FAMILY MEMBER AFTER ONE CHILD HAS PAID FULL PRICE.

## SMART CARD UPDATE

- JC Penney will no longer accept gift cards as payment on charge accounts.
- Marc's cards will be available as Cash and Carry starting Friday this week!

